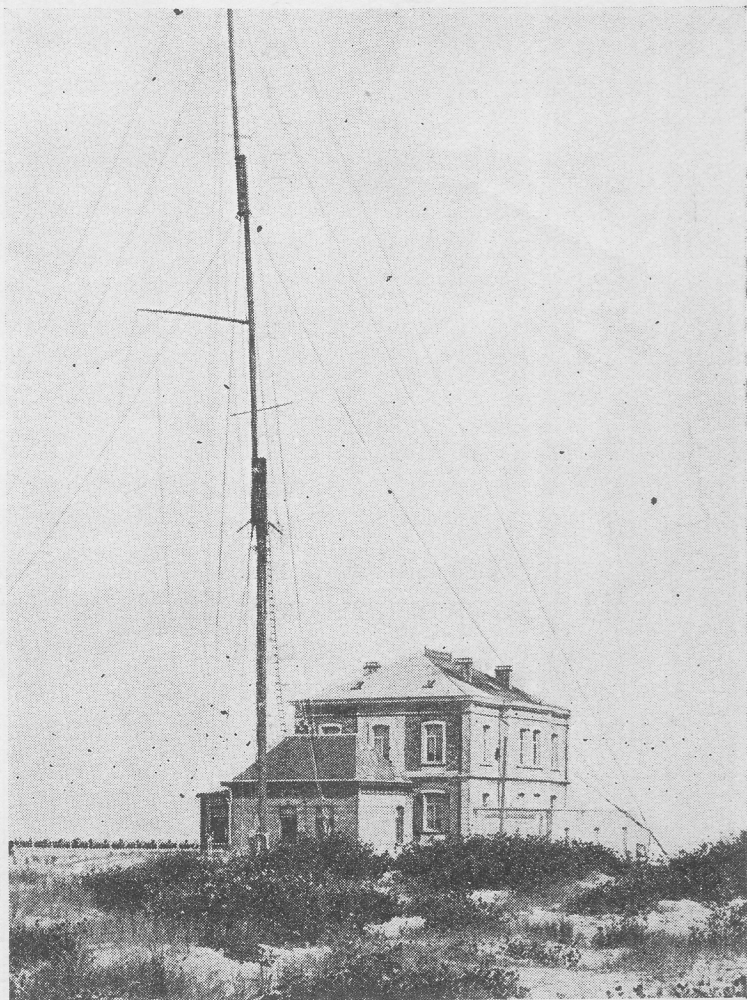


The slice of Belgian territory still remaining under the jurisdiction of King Albert is small in extent, but its activities have adjusted themselves in inverse proportion. Nieuport, whose wireless station forms the subject of our illustration, consists of two parts, Nieuport Bains and Nieuport Ville, the former being situated on the coast and the latter about two miles from the sea. The history of the mast in our illustration is somewhat eventful as masts go. It was originally erected at La Panne, but at the time when experiments were being made with regard to wireless messages to the Belgian mail-packet boats the mast was removed from La Panne and erected at Nieuport Bains. Its distance from Ostend is but twelve miles, and the station lies sufficiently close to the German lines to form a target for their artillery. There has been, therefore, some uncertainty as to whether it would not be well to take down the mast for the second time.



*Nieuport Wireless Station.*

C