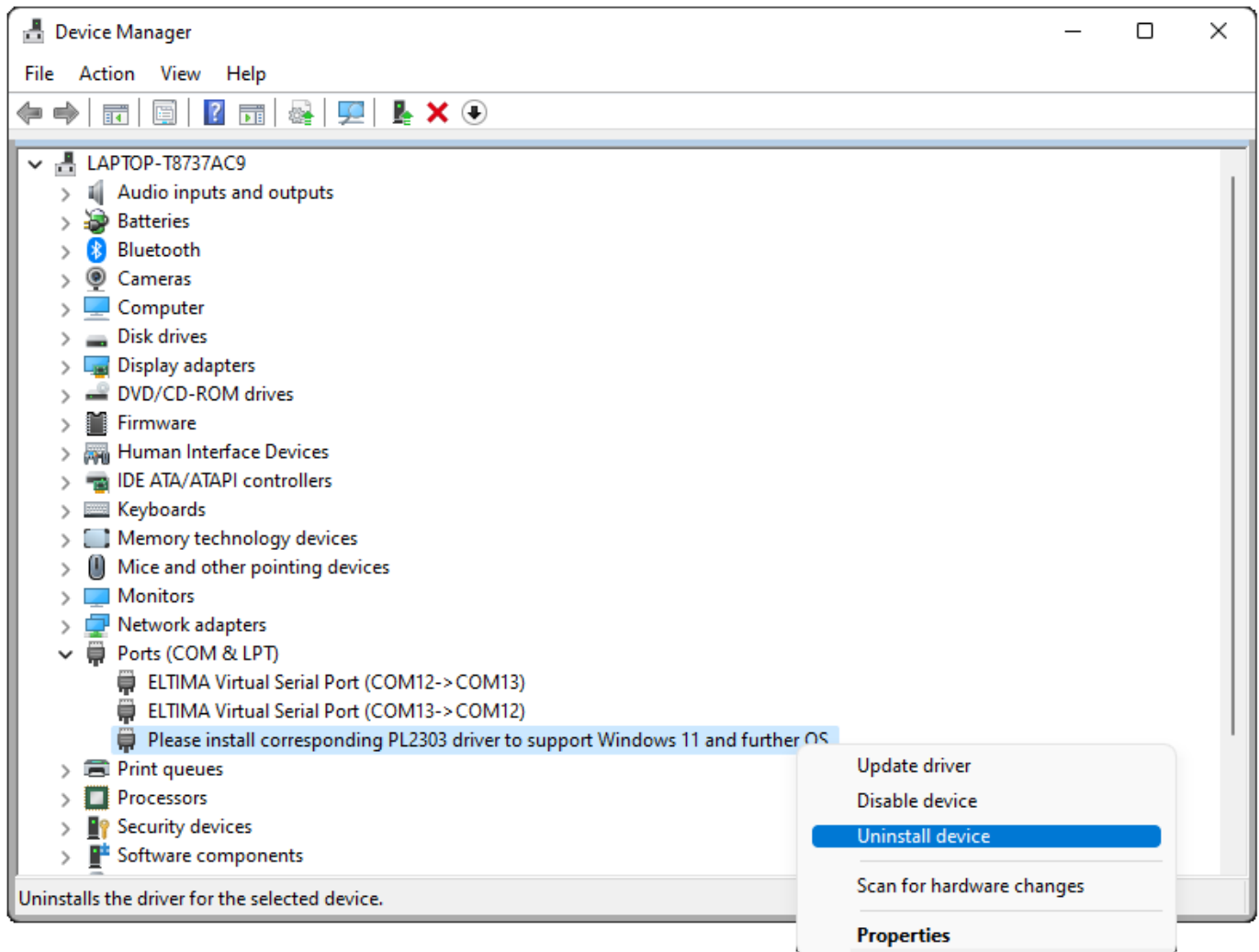


If you have plugged the SCU-39 / SCU-40 (SCU-19 / SCU-20) cable kit into you radio and Windows 11 PC before installing the drivers you will need to uninstall the automatically installed driver first.

Right hand mouse click the start button.

Click on Device Manager

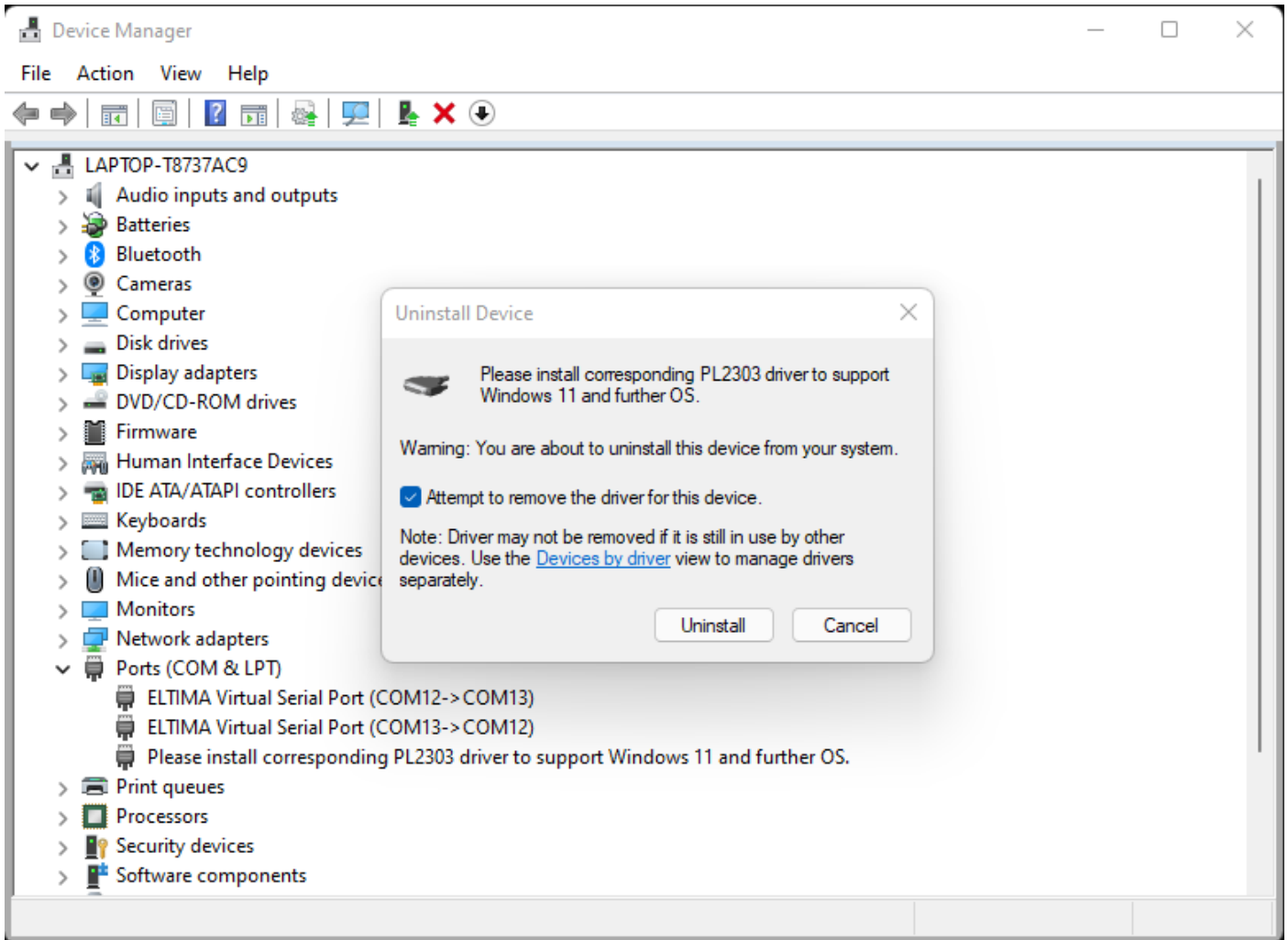


Expand the brand Ports (COM&LPT)

Right Hand Mouse Click

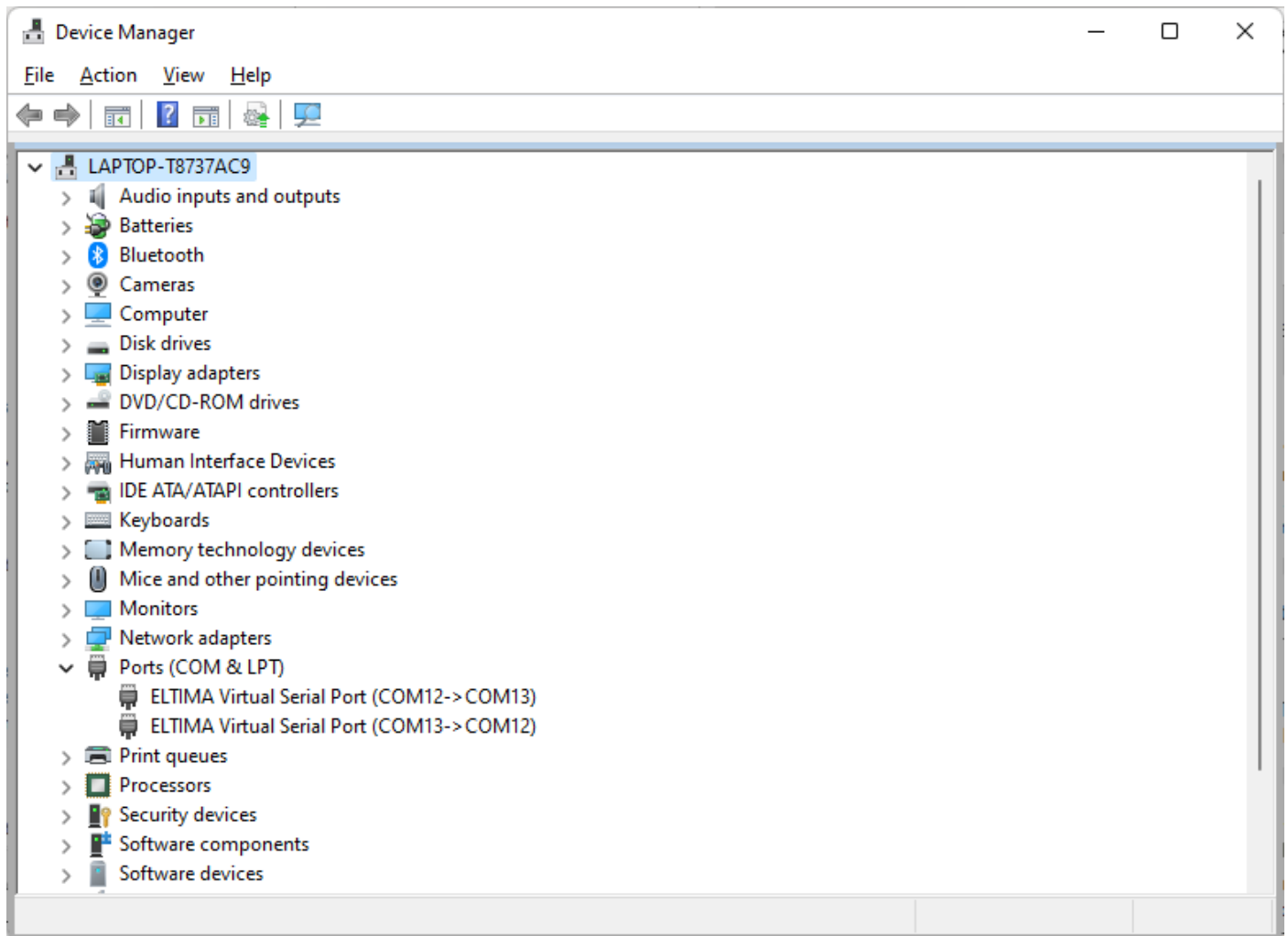
Please install corresponding PL2303 driver to support Windows 11 and further OS

Select Uninstall device



Click Attempt to remove the driver for this device.

Click Uninstall



The driver has been uninstalled and removed

Next download the SCU-19 / SCU-20 / SCU-39 / SCU-40 driver

Welcome to Yaesu.com

https://www.yaesu.com/indexVS.cfm?cmd=DisplayProducts&ProdCatID=249&encProdID=1D23D01F7B34D76072988D9857AA1A7C&DivisionID=...

Yaesu Online Techni...

Digital System Fusion FT5DR EFM-300DR FT3DR EFM-400DR/XDR DR-2

Use the left and right arrows to scroll through all models. Archived Digitals

HRI-200

Description	Files
Amateur Radio \ Manuals \ WIRES Internet Linking	<ul style="list-style-type: none">HRI-200 Reference Manual for DR-1X/XE (MAIN firmware V1.10Q) 1907-E (2.48 MB)HRI-200 Reference Manual for DR-2X/XE (1907-I) (2.51 MB)WIRES-X Connection Kit HRI-200 (Includes New DG-ID Feature) Instruction Manual (2005-J) (14.25 MB)WIRES-X Portable Digital Node Function Instruction Manual (2108-G) (12.68 MB)
Amateur Radio \ Software	<ul style="list-style-type: none">WIRES-X Connection kit HRI-200 Firmware (Ver. 1.01) (6.99 MB)WIRES-X PC Software Update Information (ver. 1.540) 8/23/21 (88.83 KB)WIRES-X Portable Digital Node Function PC Software (ver. 1.540) 8/23/21 (46.69 MB)WIRES-X Remote Monitor Software (Ver.1.010) (856.13 KB)
Amateur Radio \ WIRES Internet Linking	<ul style="list-style-type: none">SCU-19 USB Driver (PL2303) (2.17 MB)SCU-19 USB Driver Installation Manual (2108-F) (942.17 KB)

COPYRIGHT©2003-2022 Yaesu USA.

Scroll Down

Click SCU-19 USB Driver (PL2303)

Welcome to Yaesu.com

https://www.yaesu.com/indexVS.cfm?cmd=DisplayProducts&ProdCatID=249&encProdID=1D23D01F7B34D76072988D9857AA1A7C&DivisionID=...

Yaesu Online Techni...

Digital System Fusion FT5DR EFM-300DR FT3DR EFM-400DR/XDR DR-2

Use the left and right arrows to scroll through all models. Archived Digitals

HRI-200

Description	Files
Amateur Radio \ Manuals \ WIRES Internet Linking	<ul style="list-style-type: none">HRI-200 Reference Manual for DR-1X/XE (MAIN firmware V1.10Q) 1907-E (2.48 MB)HRI-200 Reference Manual for DR-2X/XE (1907-I) (2.51 MB)WIRES-X Connection Kit HRI-200 (Includes New DG-ID Feature) Instruction Manual (2005-J) (14.25 MB)WIRES-X Portable Digital Node Function Instruction Manual (2108-G) (12.68 MB)
Amateur Radio \ Software	<ul style="list-style-type: none">WIRES-X Connection kit HRI-200 Firmware (Ver. 1.01) (6.99 MB)WIRES-X PC Software Update Information (ver. 1.540) 8/23/21 (88.83 KB)WIRES-X Portable Digital Node Function PC Software (ver. 1.540) 8/23/21 (46.69 MB)WIRES-X Remote Monitor Software (Ver.1.010) (856.13 KB)
Amateur Radio \ WIRES Internet Linking	<ul style="list-style-type: none">SCU-19 USB Driver (PL2303) (2.17 MB)SCU-19 USB Driver Installation Manual (2108-F) (942.17 KB)

Downloads

- SCU-19_PC_Connection_Cable_Driver (1).zip
336 KB/s - 1,008 KB of 2.3 MB, 3 secs left
- wx1540en.zip
[Open file](#)

[See more](#)

https://www.yaesu.com/downloadFile.cfm?FileID=17066&FileCatID=41&FileName=SCU-19_PC_Connection_Cable_Driver.zip&FileContentType=application%2Fzip-compressed

When the driver has finish downloading click on Open File

The screenshot shows the Yaesu website interface. The top navigation bar includes links for Digital, System Fusion, FTSDR, ETM-3000R, ETSDR, ETM-4000R/XDR, and DR-2. The main content area is titled 'HRI-200' and lists various manuals and software files. A download bar at the top right shows the SCU-19_PC_Connection_Cable_Driver (1) file being downloaded. A Windows File Explorer window is open, showing the downloaded file in the Downloads folder. The file is named 'PL2303_Prolific_DriverInstaller_v1.8.0' and is an application file. The file size is 3,136 KB. The file was downloaded on 21/06/2013 18:09.

Amateur Radio \ Manuals \ WIRES Internet Linking

- [HRI-200 Reference Manual for DR-1X/XE \(MAIN firmware V1.10Q\) 1907-E](#) (2.48 MB)
- [HRI-200 Reference Manual for DR-2X/XE \(1907-I\)](#) (2.51 MB)
- [WIRES-X Connection Kit HRI-200 \(Includes New DG-ID Feature\) Instruction Manual \(2005-J\)](#) (14.25 MB)
- [WIRES-X Portable Digital Node Function Instruction Manual \(2108-G\)](#) (12.68 MB)

Amateur Radio \ Software

- [WIRES-X Connection kit HRI-200 Firmware \(Ver. 1.01\)](#) (6.99 MB)
- [WIRES-X PC Software Update Information \(ver. 1.540\) 8/23/21](#) (88.83 KB)
- [WIRES-X Portable Digital Node Function PC Software \(ver. 1.540\) 8/23/21](#) (46.69 MB)
- [WIRES-X Remote Monitor Software \(Ver.1.010\)](#) (856.13 KB)

Amateur Radio \ WIRES Internet Linking

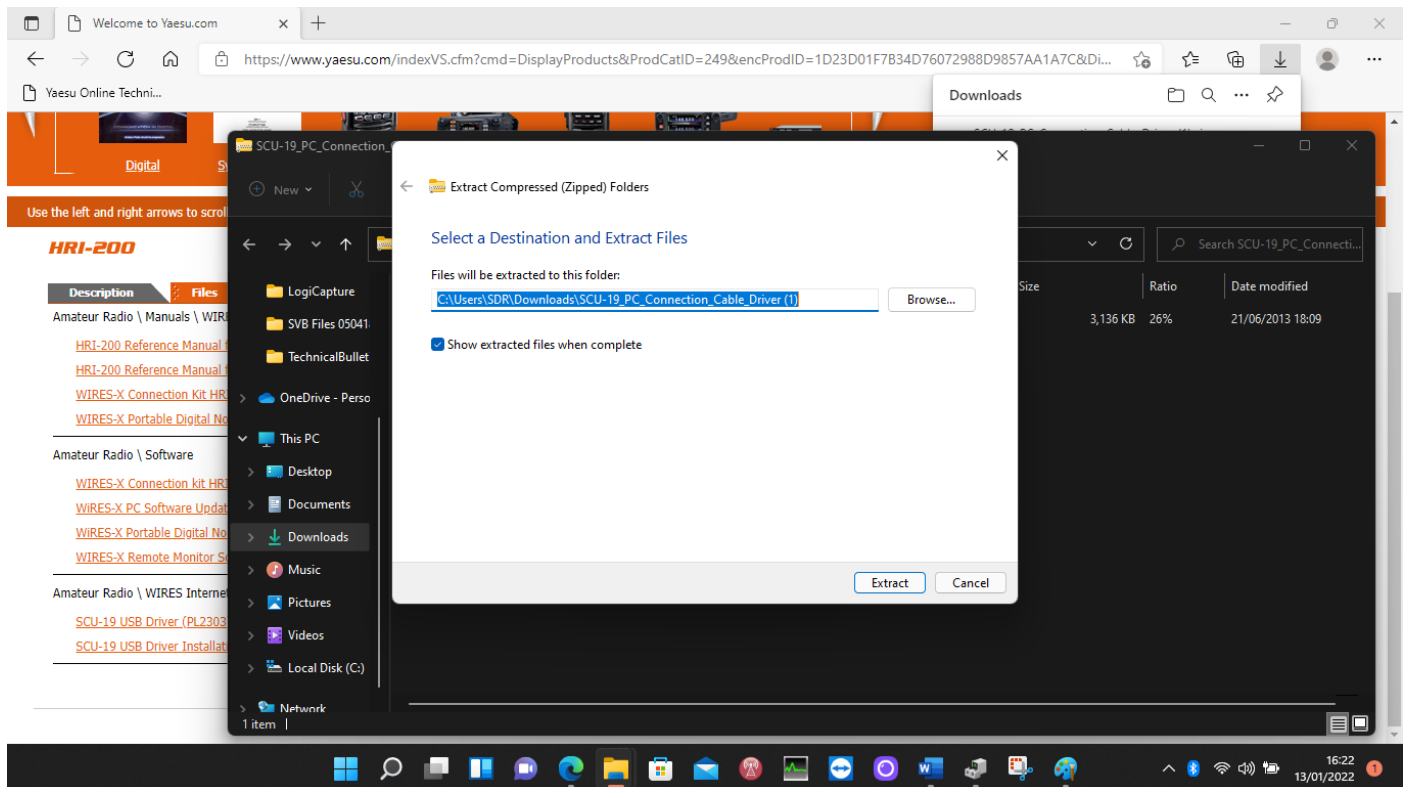
- [SCU-19 USB Driver \(PL2303\)](#) (2.17 MB)
- [SCU-19 USB Driver Installation Manual \(2108-F\)](#) (942.17 KB)

COPYRIGHT ©2003-2022 Yaesu USA.

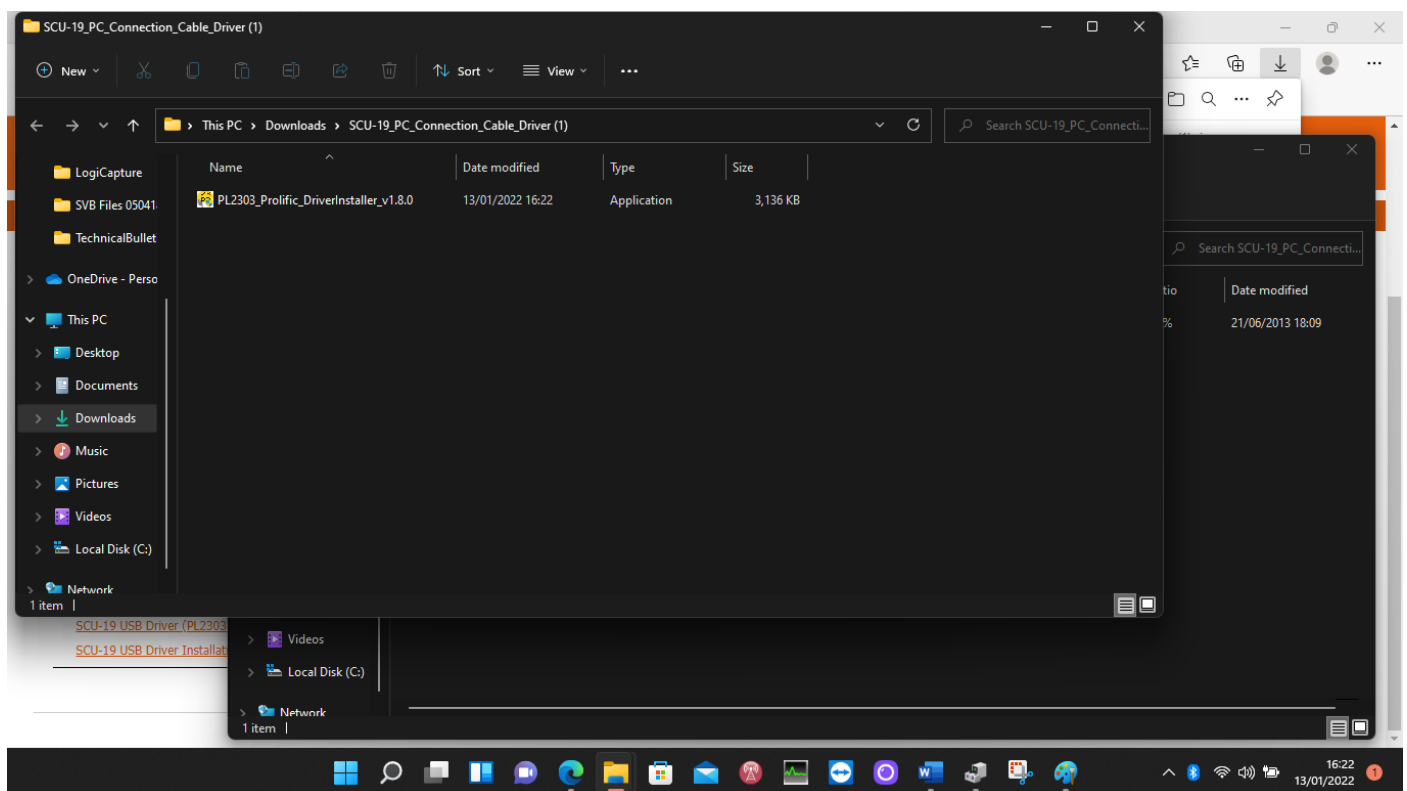
Windows File Explorer window showing the downloaded file:

Name	Type	Compressed size	Password ...	Size	Ratio	Date modified
PL2303_Prolific_DriverInstaller_v1.8.0	Application	2,332 KB	No	3,136 KB	26%	21/06/2013 18:09

Click Extract all

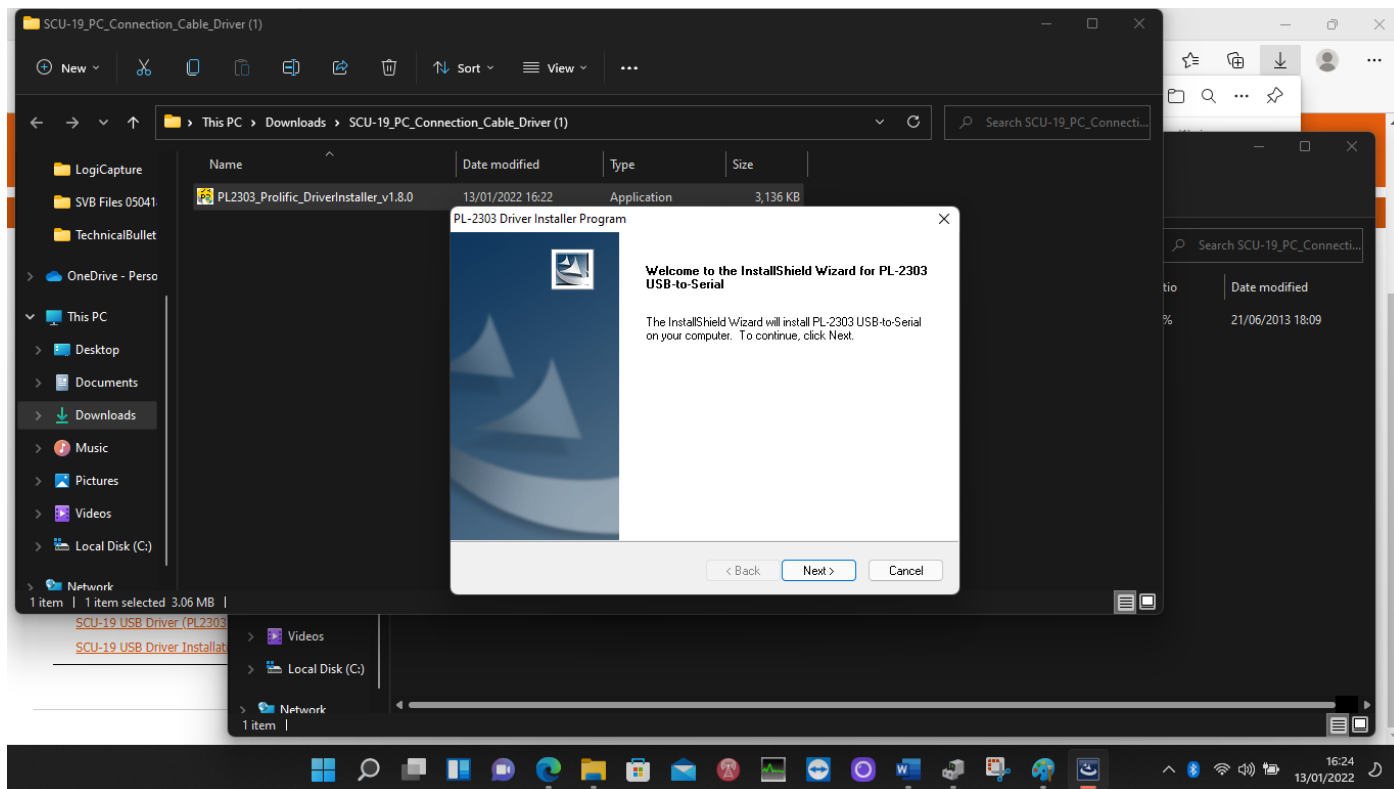


Click Extract

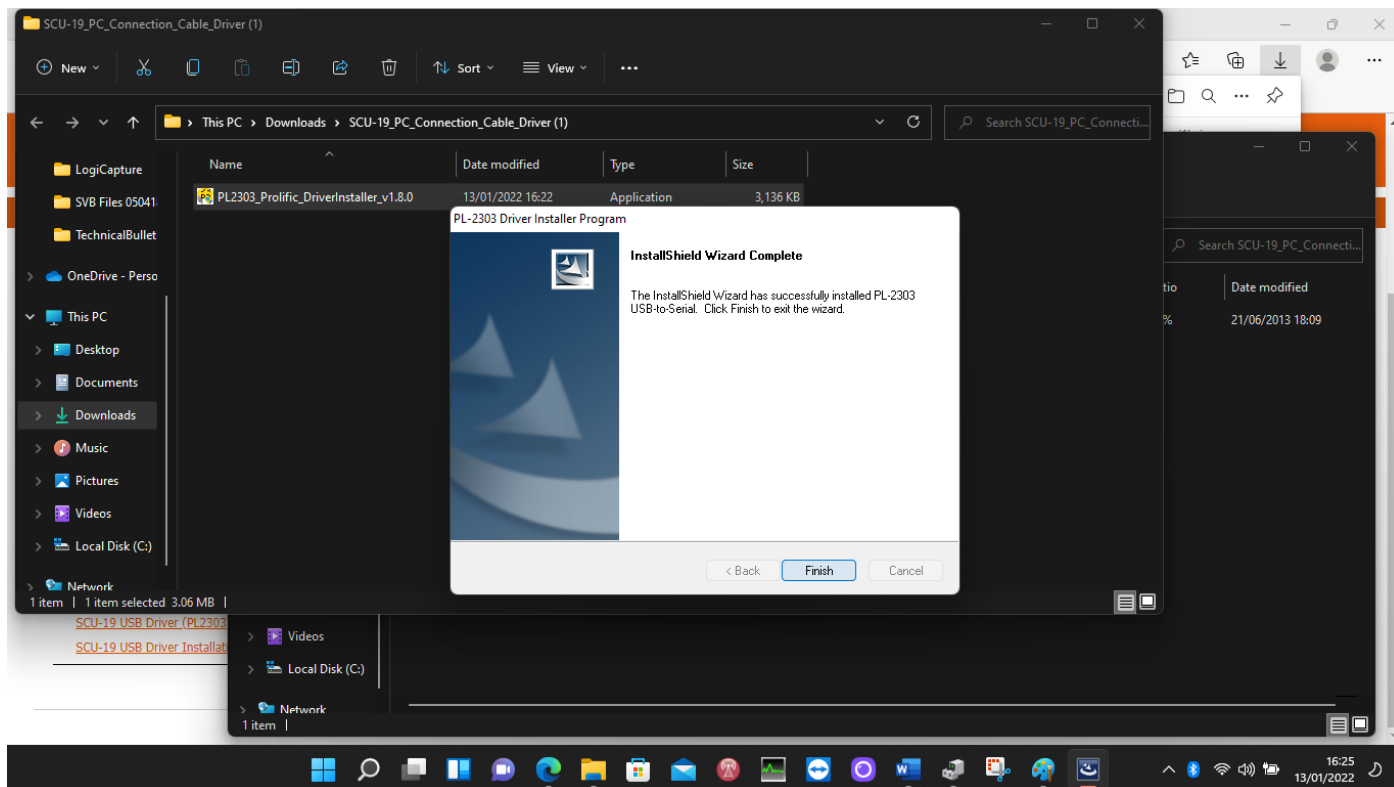


Double click on PL2303_Prolific_DriverInstalled_V1.8.0

When the User Account Control window is displayed click Yes



Click Next



Click Finish

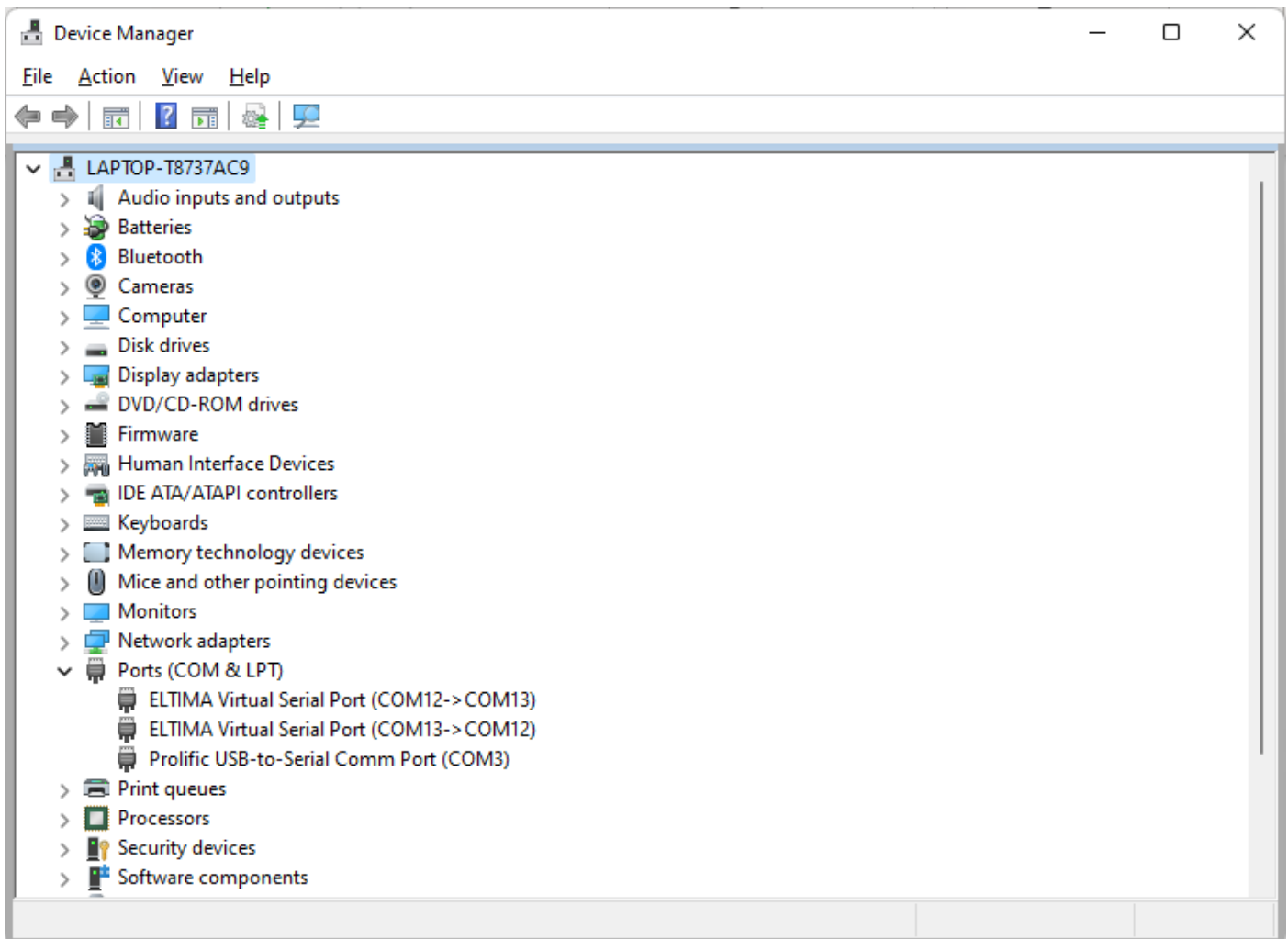
Close SCU-19_PC_Connection Cable Driver windows

Unplug the SCU-19 or SCU-20 cable

Plug the SCU-19 or SCU-20 cable back in

The correct driver should now install.

To check go into Device Manager.



Expand Ports (COM & LPT)

The driver should now be listed as Prolific USB-to-Serial Comm Port (COMx)

On the dropdown list click the down arrow.

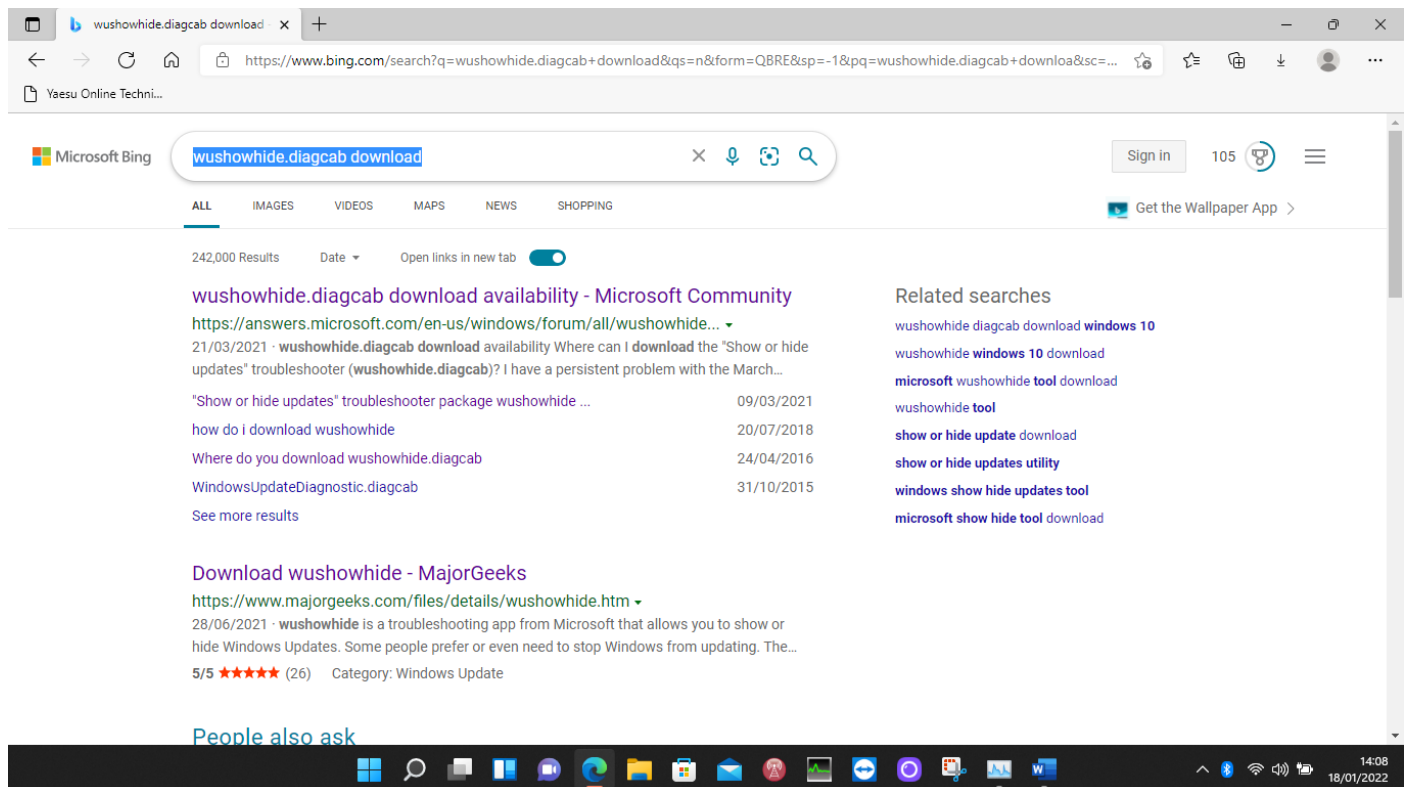
Select the Prolific USB-to-Serial Comm Port (COMx)

OPTIONAL

Prevent Windows from downloading an updated driver and overwriting the installed driver.

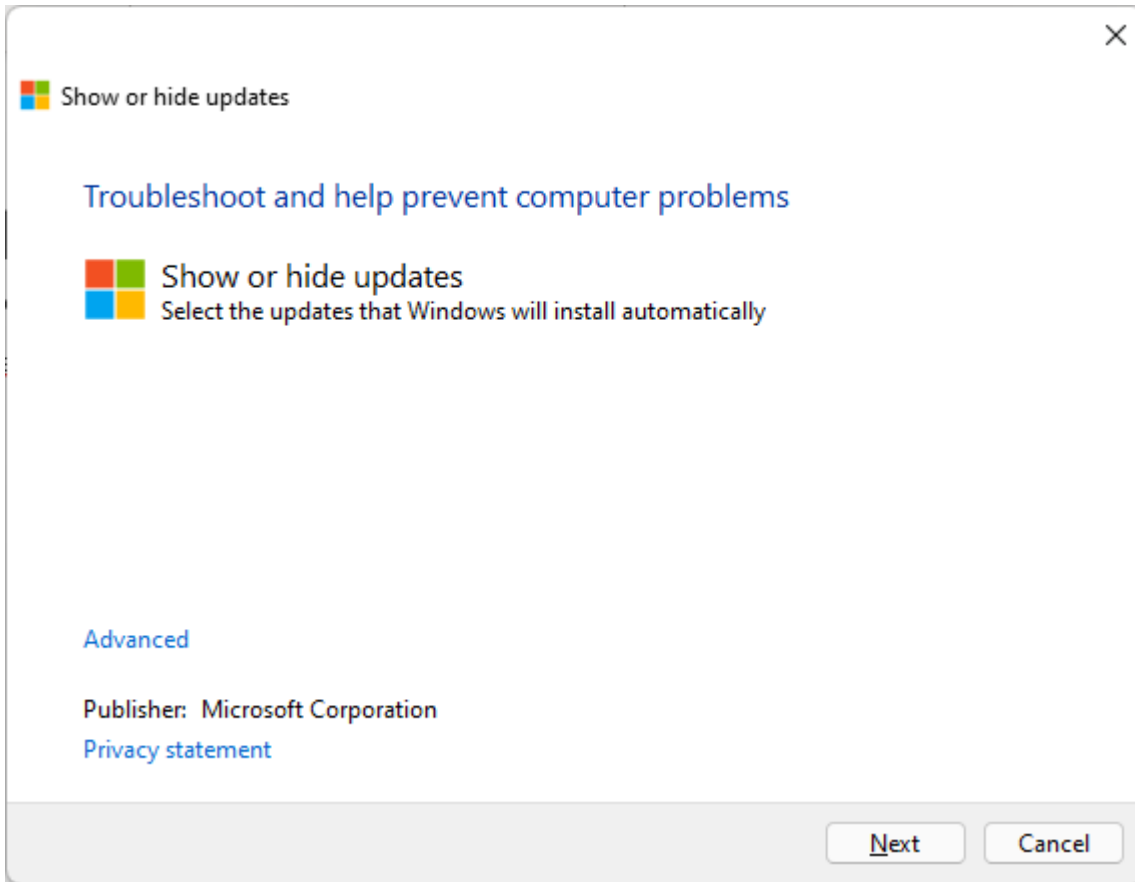
In your web browser search for and download

wushowhide.diagcab

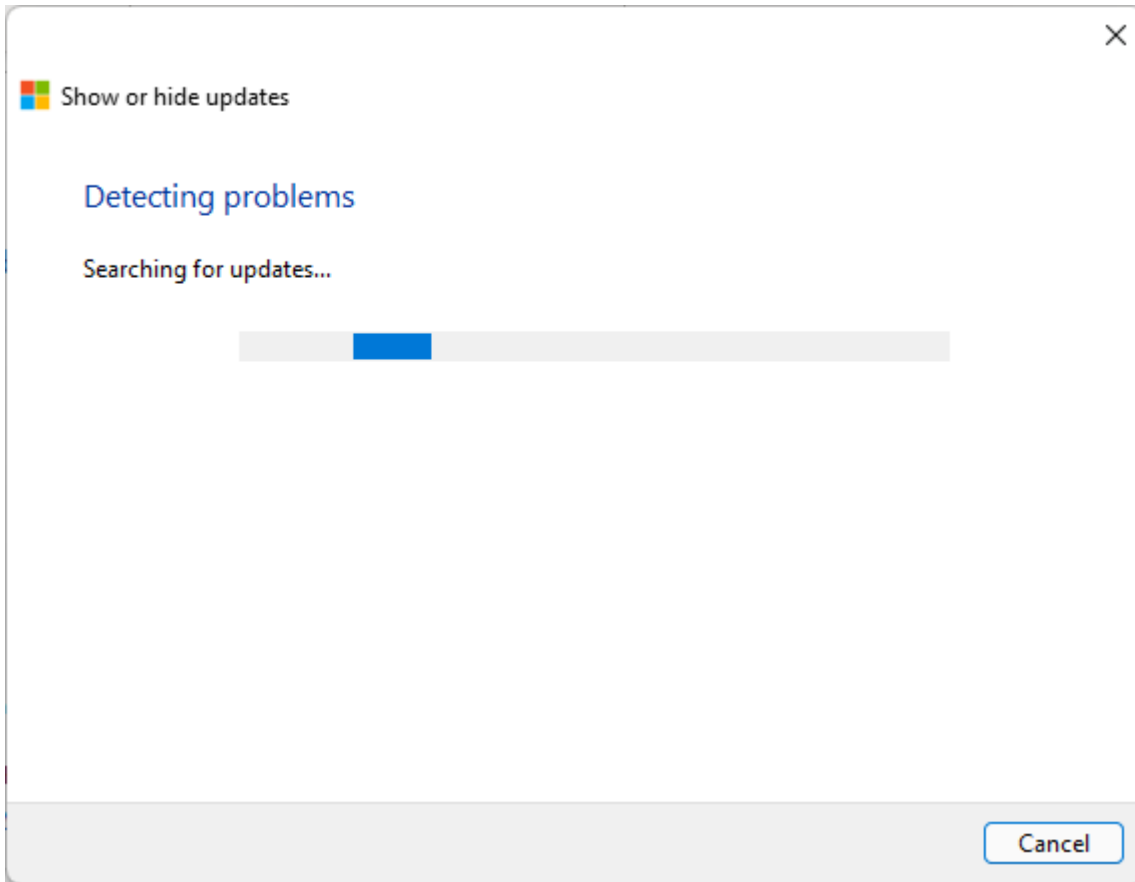


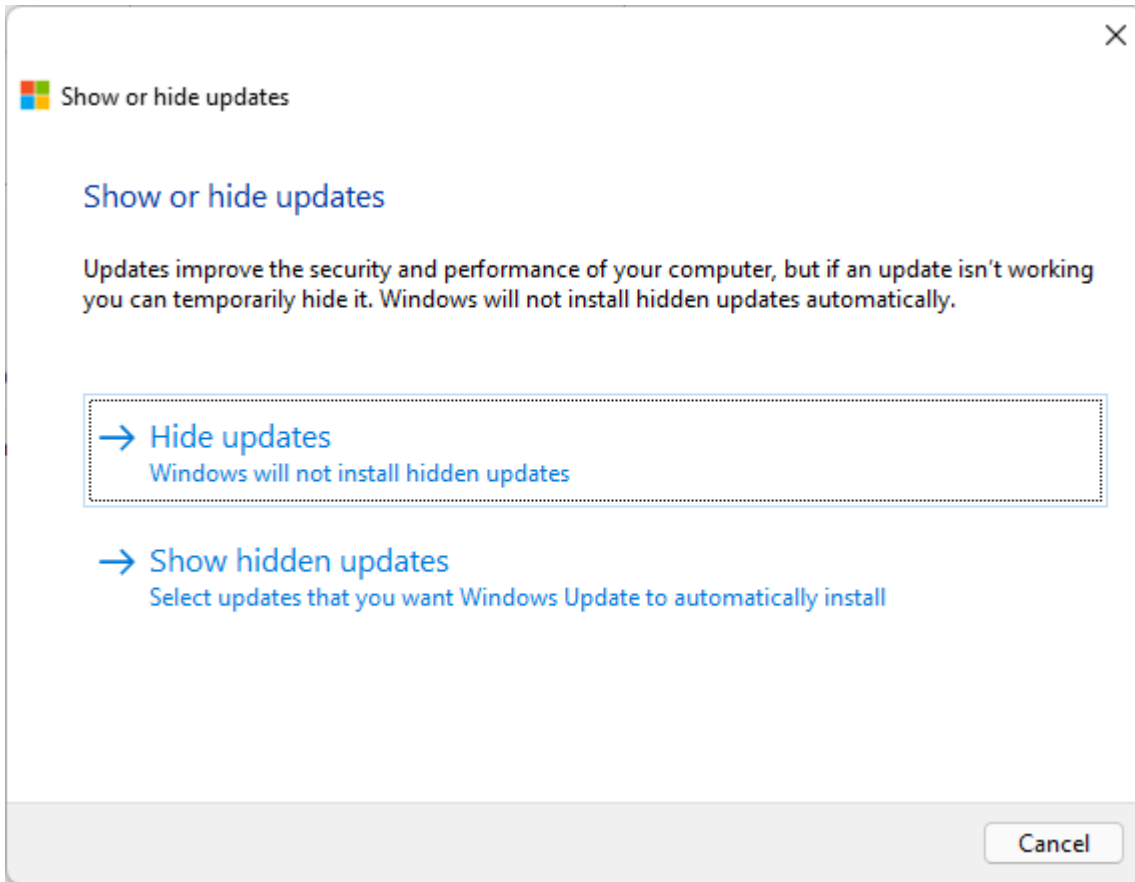
Once downloaded run

wushowhide.diagcab

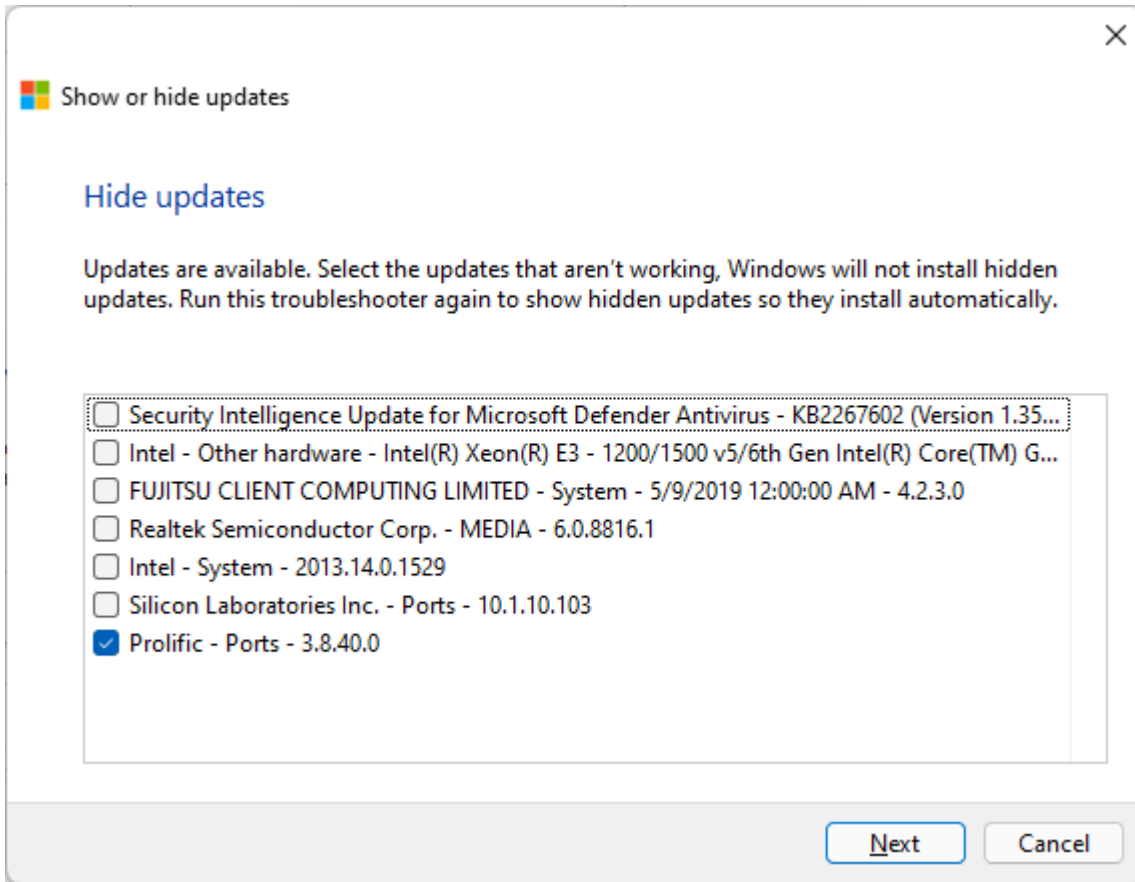


Click Next



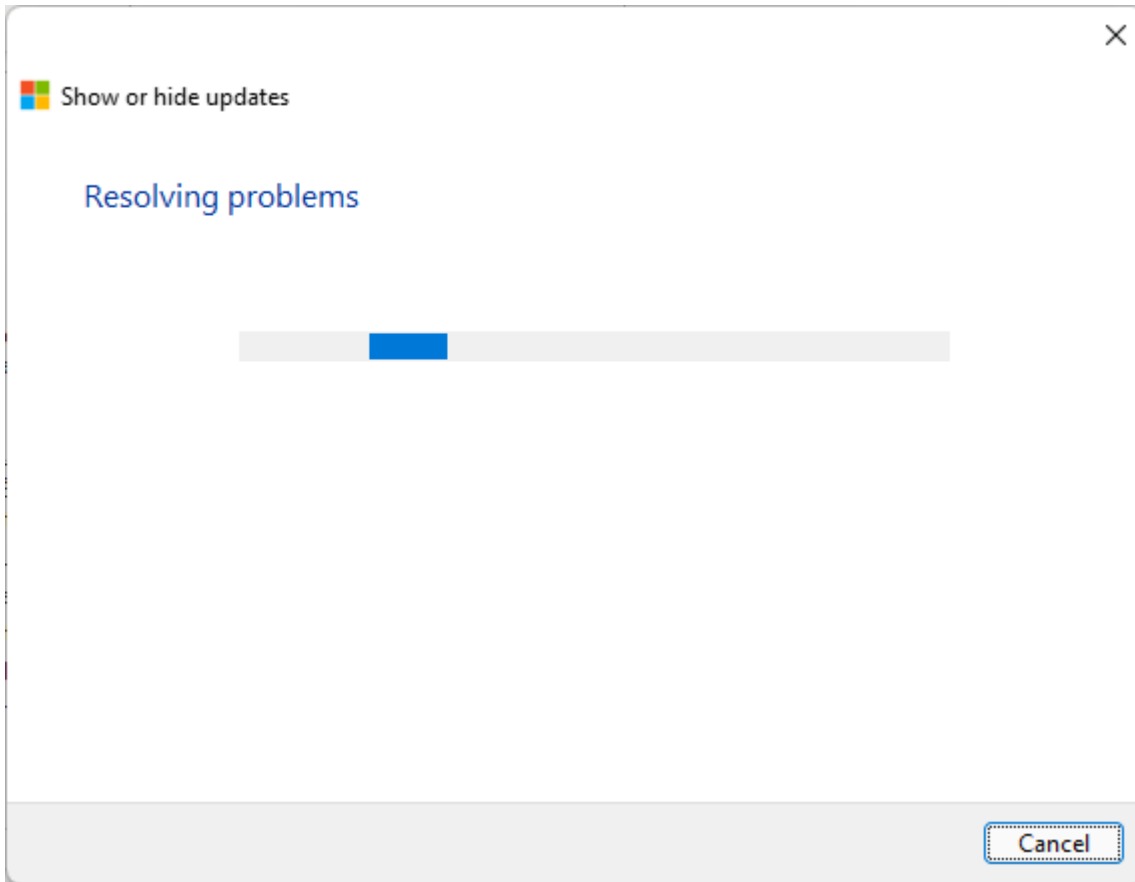


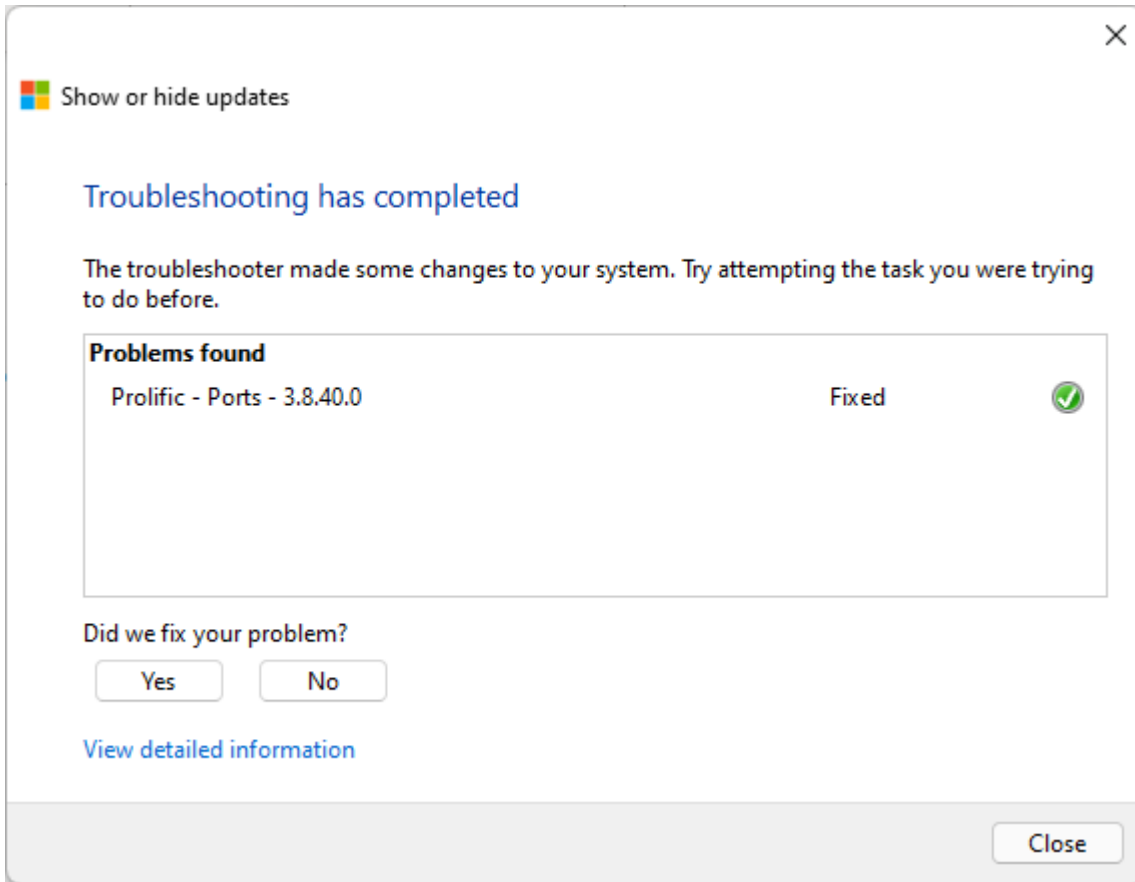
Click Hide updates



Select Prolific – Ports – x.x.xx.x

Click Next





Click Close